



HEATING UNITS

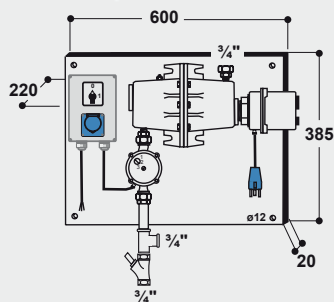
400 V 230 V
101.0300 101.0303



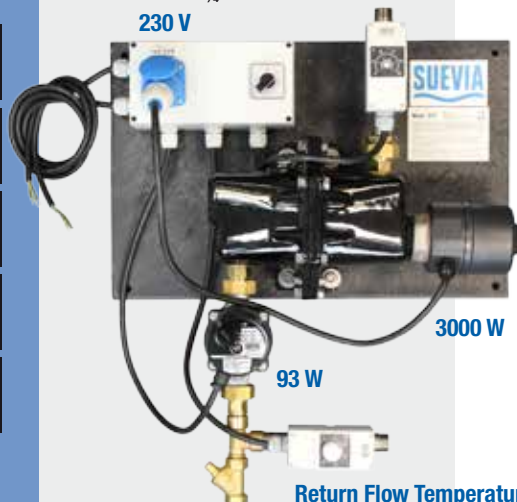
93 W

3000 W

included in scope of delivery:



230 V

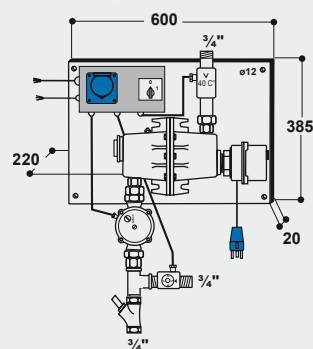


93 W

3000 W

Return Flow Temperature Control

included in scope of delivery:



Heating Unit

Model 300, 3000 W, 400 V

Order Ref. 101.0300

Model 303, 3000 W, 230 V

Order Ref. 101.0303

- Provides frost-protected water in **insulated water circuits** (½" or ¾" pipe). Circuit length **max. 200 m**
- Designed for use in exposed locations and free stalls especially for cattle, horses, pigs and sheep. Animals are provided with water in a reliable way, even in very frosty conditions.
- Heating units Model 300 and 303 are equipped each **with one 3000 W heating element** and a **circulation pump with stainless steel base (230 V, 93 W)**
- Heating element is thermostatically controlled and equipped with an overheating protection (STC). Desired water flow temperature can be adjusted at a regulable switch.
- Cage of heating element in premium cast iron, enamelled
- Model 300 and Model 303 are factory-mounted on a plate ready for immediate installation and use! Water connections are hold in ¾".
- Scope of delivery includes vent-valve, pressure relief valve, non-return valve, and non-return flap
- One residual-current device 30mA has to be provided by the customer.

Order Ref.	Type	Packing Hints		
101.0300	Heating unit Mod. 300, 400 V, 3000 W, pump 93 W	1 piece/box		
101.0303	Heating unit Mod. 303, 230 V, 3000 W, pump 93 W	1 piece/box		
101.0309	Flow control ¾"	1 piece		
101.0308	Alarm system for water circuits	1 set/bag		
101.1348	Upgrade Kit to Return Flow Temperature Control for Mod. 303 with a blue CEKON plug	1 set/box		

Heating Unit with Return Flow Temperature Control

Model 317, 3000 W, 230 V

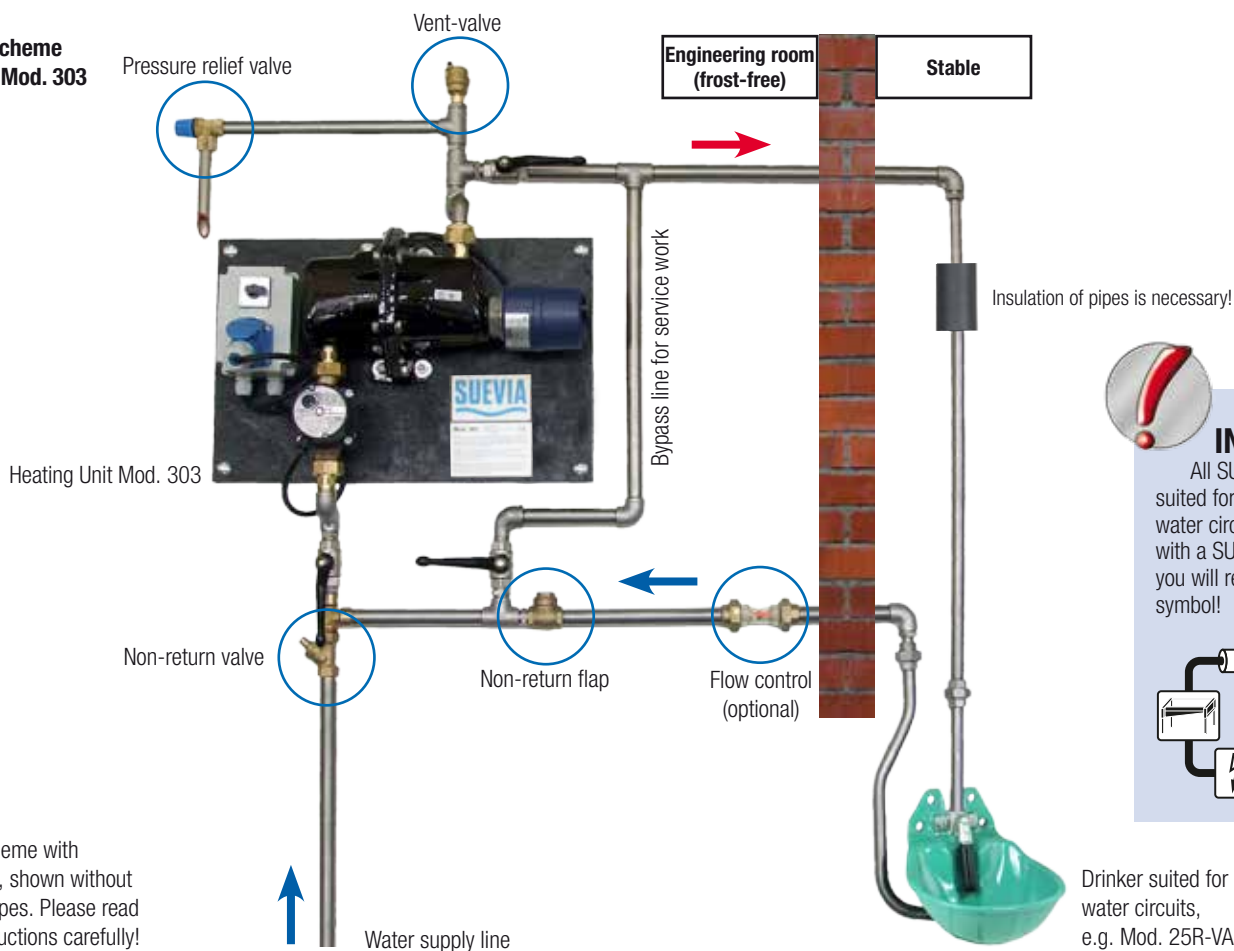
Order Ref. 101.0317

- Provides frost-protected water in **insulated water circuits** (½" or ¾" pipe). Circuit length **max. 200 m**
- Designed for use in exposed locations and free stalls especially for cattle, horses, pigs and sheep. Animals are provided with water in a reliable way, even in very frosty conditions.
- Heating unit Model 317 is equipped **with one heating element (230 V, 3000 W)** and with a **circulation pump with stainless steel base (230 V, 93 W)**.
- Cage of heating element in premium cast iron, enamelled
- The unit is factory-mounted on a plate and ready for installation. Water connections are hold in ¾".
- **With return flow temperature control:** Desired return water flow temperature is regulated by a sensor mounted on the return flow pipe. If return flow water temperature is lower than the adjusted value, the heating element will be automatically switched on.
- Heating elements are thermostatically controlled and equipped with an overheating protection (STC)
- Scope of delivery includes vent-valve, pressure relief valve, non-return valve, and non-return flap
- Two residual-current devices 30mA have to be provided by the customer. They serve to secure the pump and the heating elements in a separated way.

Order Ref.	Type	Packing Hints		
101.0317	Heating unit Mod. 317, 230 V, 3000 W, pump 93 W	1 piece/box		
101.0309	Flow control ¾"	1 piece		
101.0308	Alarm system for water circuits	1 set/bag		



Installation scheme Heating Unit Mod. 303 (or Mod. 300)

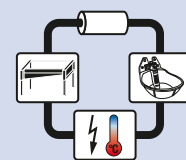


Installation scheme with optimized view, shown without insulation of pipes. Please read mounting instructions carefully!



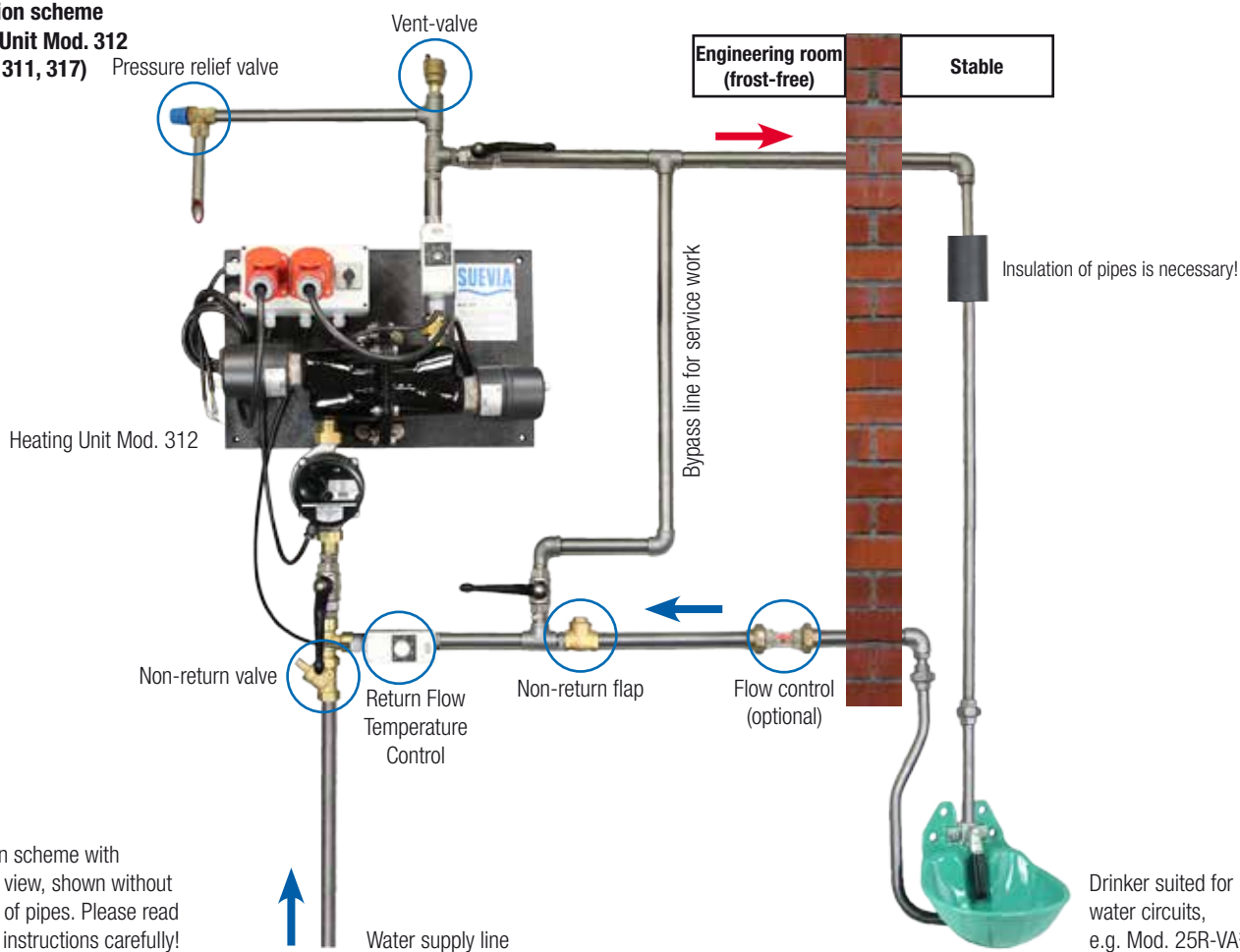
INSIDER TIP!

All SUEVIA drinkers suited for installation into a water circuit in combination with a SUEVIA Heating Unit, you will recognize at this symbol!



Drinker suited for water circuits, e.g. Mod. 25R-VA¾"

Installation scheme Heating Unit Mod. 312 (or Mod. 311, 317)



Installation scheme with optimized view, shown without insulation of pipes. Please read mounting instructions carefully!

Drinker suited for water circuits, e.g. Mod. 25R-VA¾"